

Zebra Robotics Automation™

Fetch100 Flex

Increase efficiency and productivity with autonomous mobile robot (AMR) solutions designed for flexibility and safety from Zebra



Fetch100 Flex Series

Fulfillment Will Never Be the Same

Key Benefits

- Adjustable shelves accommodate a variety of totes, bins and boxes
- Dynamic LED lighting improves pick accuracy with put-to-light guidance
- Can be loaded and unloaded from either side
- Supports item, batch, case and pallet picking
- Integrates with existing WES and WMS installations
- Highly configurable picker interface



NOTE: Product appearance is subject to change



Specifications	Fetch100 Flex Guide	Fetch100 Flex Guide (Dual)
Weight (with 2 shelves installed)	200.7 lb (91.1 kg)	206.2 lb (93.5 kg)
Height	Standard: 59.1 in. (150 cm) Tall: 64.4 in. (163.5 cm)	Standard: 59.1 in. (150 cm) Tall: 64.4 in. (163.5 cm)
Base Footprint	20.8 in. (52.8 cm) width; 24.1 in. (61.1 cm) length	20.8 in. (52.8 cm) width; 24.1 in. (61.1 cm) length
Max Payload Weight	165 lb (75 kg)	165 lb (75 kg)
Max Payload Width	16.6 in. (42.2 cm)	16.6 in. (42.2 cm)
Max Payload Length	23.8 in. (60.5 cm)	23.8 in. (60.5 cm)
Max Payload Height	Up to 34.6 in. (88 cm)	Up to 34.6 in. (88 cm)
Max Speed	3.9 mph (1.75 m/s)	3.9 mph (1.75 m/s)
Turning Radius	Turn in place	Turn in place
Continuous Runtime	~9 hrs	~9 hrs
Environment	Indoors	Indoors
Charging	Autonomous docking	Autonomous docking
Charge Time	3 hrs to 90%	3 hrs to 90%
2D Laser Sensor	SICK, 82 ft. (25 m), 220°	SICK, 82 ft. (25 m), 220°
3D Camera	Yes (2x)	Yes (2x)

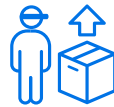
Key Workflows



Order
Picking

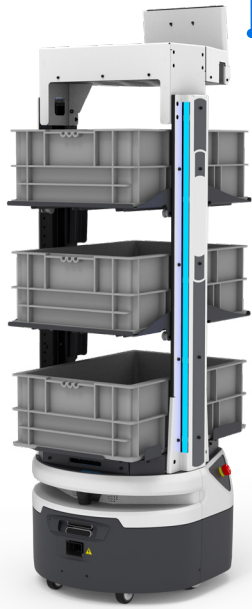


Batch
Picking



Receiving and
Putaway





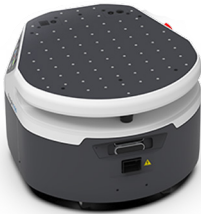
Fetch100 Flex Series

Optimize fulfillment operations with intelligent, flexible automation



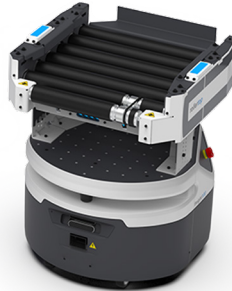
Fetch100 Connect

Automatically pick up and drop off carts up to 125 lbs. (57 kg)



Fetch100 OEM Base

Build your own customized automated solution on a proven platform



Fetch100 Roller

Integrate with current conveyor infrastructure



Fetch100 Shelf

Transport packages, totes and bins up to 172 lbs. (78 kg)



WARNING: This product uses components which emit invisible laser radiation. Incorrect use or observing the safety laser scanner through optical instruments (such as magnifying glasses, lenses, telescopes) may be hazardous for the eyes.



Zebra AMRs carry a CE mark and meet regulatory requirements for product safety.

ANSI/RIA R15.08

Zebra AMRs conform with R15.08 safety standards published by the RIA (Robotics Industry Association)

NOTE: Product appearance is subject to change

Discover how Zebra Robotics Automation can work for you—
scan or click the QR code for more information



LEXTER
People You Can Trust
Via Nervesa n.2 · 20139 Milano · Tel. 02-55230846 · info@lexter.com



Premier
Solution Partner
Mobile Robotics Specialist