

Zebra
Robotics Automation™

Fetch100 Connect AMR

Increase efficiency and productivity with autonomous mobile robot (AMR) solutions designed for flexibility and safety from Zebra

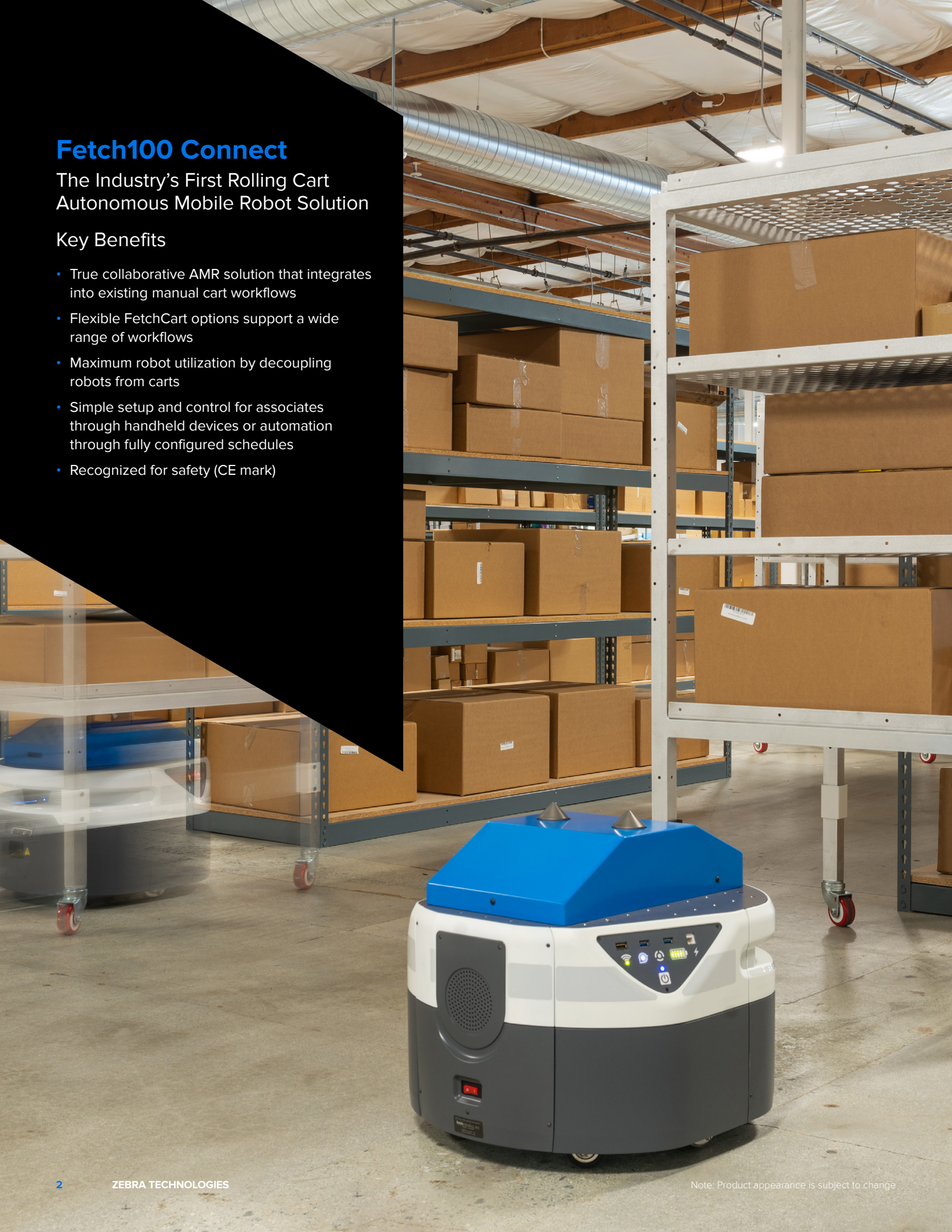


Fetch100 Connect

The Industry's First Rolling Cart Autonomous Mobile Robot Solution

Key Benefits

- True collaborative AMR solution that integrates into existing manual cart workflows
- Flexible FetchCart options support a wide range of workflows
- Maximum robot utilization by decoupling robots from carts
- Simple setup and control for associates through handheld devices or automation through fully configured schedules
- Recognized for safety (CE mark)



Warehouse Carts 2.0

The Fetch100 Connect AMR system features an advanced mobile robot that can autonomously pick up and drop off FetchCarts to any location within your facility. FetchCarts are available in three sizes—Standard, Tall and a flexible cart Base option that allows you to customize the cart to suit your specific payload.



Specifications	Fetch100 Connect	FetchCart Base	FetchCart	FetchCart Tall*
Weight	163 lbs. (74 kg)	44 lbs. (20 kg)	75 lbs. (34 kg)	85 lbs. (38.5 kg)
Height	19.5 in. (49.6 cm)	24.5 in. (62.3 cm)	55.1 in. (140 cm)	65 in. (165 cm)
Base Footprint	20.7 in. (52.7 cm) wide, 22.6 in. (57.3 cm) diameter	32.7 in. (83 cm) width, 32.7 in. (83 cm) length	32.7 in. (83 cm) width, 32.7 in. (83 cm) length	32.7 in. (83 cm) width, 32.7 in. (83 cm) length
Shelf Width	—	32.7 in. (83 cm)	32.7 in. (83 cm)	32.7 in. (83 cm)
Shelf Depth	—	32.7 in. (83 cm)	32.7 in. (83 cm)	32.7 in. (83 cm)
Max Payload Weight	—	Up to 180 lbs. (81.6 kg)	Up to 150 lb (68 kg)	Up to 140 lbs. (63.5 kg)
Max Speed	3.9 mph (1.75 m/s)	—	—	—
Turning Radius	Turn in place	Turn in place	Turn in place	Turn in place
Continuous Runtime	~9 hrs	—	—	—
Environment	Indoor	Indoor	Indoor	Indoor
Charging	Autonomous docking	—	—	—
Charge Time	3 hrs to 90%	—	—	—
2D Laser Sensor	82 ft. (25 m), 220° (x1)	—	—	—
3D Camera	Yes (x2)	—	—	—
CE, ANSI/RIA R15.08, and UKCA compliant				

* Requires a risk assessment

Key Workflows



Case
Picking



Replenishment/
Putaway



Raw Material
Delivery



ASRS
Induction



E-Commerce
Fulfillment



Staging/
Consolidation

Product Spotlight

FetchCart Base

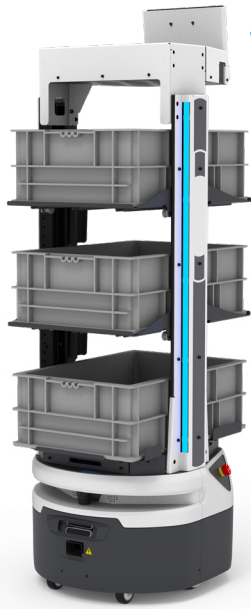
Maximize Every Payload with Custom Carts

Move More Material Types

FetchCart Base serves as the starting point for designing your own customized material transport system and applying automation creatively and efficiently throughout your facility. You can accommodate a wide variety of payloads and maximize capacity per your application requirements. FetchCart Base uses the same reliable docking mechanism as our standard FetchCarts, so Fetch100 Connect AMRs interface seamlessly.

Some unique applications include: detrash and dunnage removal, parts and tools delivery, replenishment of packing materials, gravity feed racks for manufacturing work cells, and many more.





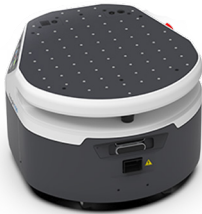
Fetch100 Flex Series

Optimize fulfillment operations with intelligent, flexible automation



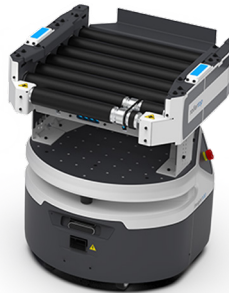
Fetch100 Connect

Automatically pick up and drop off carts up to 125 lbs. (57 kg)



Fetch100 OEM Base

Build your own customized automated solution on a proven platform



Fetch100 Roller

Integrate with current conveyor infrastructure



Fetch100 Shelf

Transport packages, totes and bins up to 172 lbs. (78 kg)



WARNING: This product uses components which emit invisible laser radiation. Incorrect use or observing the safety laser scanner through optical instruments (such as magnifying glasses, lenses, telescopes) may be hazardous for the eyes.



Zebra AMRs carry a CE mark and meet regulatory requirements for product safety.

ANSI/RIA R15.08

Zebra AMRs conform with R15.08 safety standards published by the RIA (Robotics Industry Association)

NOTE: Product appearance is subject to change

Discover how Zebra Robotics Automation can work for you—
scan or click the QR code for more information



LEXTER
People You Can Trust
Via Nervesa n.2 · 20139 Milano · Tel. 02-55230846 · info@lexter.com



Premier
Solution Partner
Mobile Robotics Specialist